



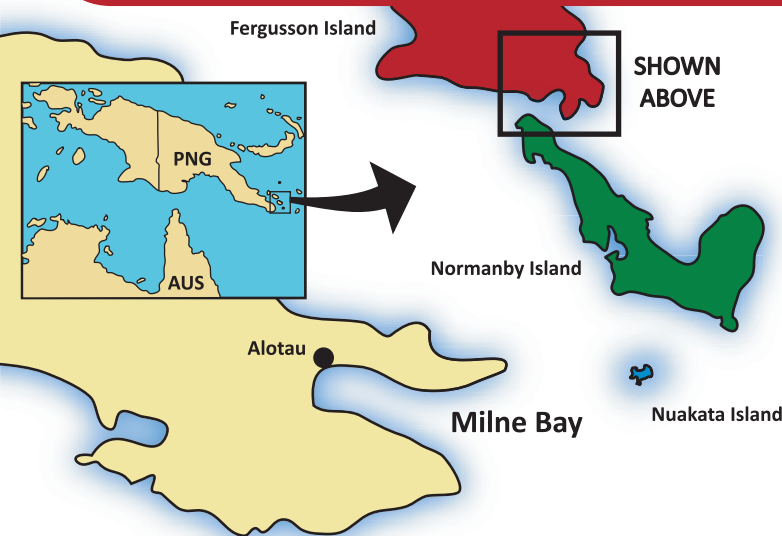
# Fergusson Island



## KEY ATTRACTIONS

All attractions and activities must be carried out with local guides. This can be arranged through your Guest House.

- 1 Elagege:** 6 hr return; challenging mountain hike from Gomwa Guest House. Very steep inclines and dense jungle. Stunning views of surrounding areas from the top with a cool sea breeze.
- 2 Galubwa:** 7 hr return; moderate to strenuous walk from Gomwa Guest House. The terrain is mostly flat with some undulation and some steep inclines. You will journey through jungle, cross cool streams, and walk past local villages and gardens. The walk to Galubwa village is only moderately difficult; enjoy lunch at Galubwa village. From Galubwa, hike through rainforest to the waterfall (steep ascent) to jump from 6-12m into a cool and deep pool below.
- 3 Hot Springs:** 1hr return; easy and flat walk from DeiDei Guest House through scrub to spurting geysers, hot springs, boiling mud pools and thermal stream. Bathe in the thermal stream and cook food in the hot springs.
- 4 Budoya Market:** 2hr return; easy and flat walk from DeiDei Guest House to Budoya Market. You will pass local villages, schools, and churches and arrive at the local market. A good variety of fresh produce and a great cultural experience.
- 5 DeiDei to Waluma:** 1hr (one way); easy and flat walk from DeiDei Guest House to Waluma Guest House past local villages and gardens.
- 6 Swimming:** Swim from Waluma Guest House along the coast and experience underwater thermal vents and the mouth of a thermal stream coming out to sea. A unique swimming experience in hot sea water.
- 7 Snorkelling:** 3 hr return; travel by traditional war canoe from Waluma Guest House to Elvis Island and Guiya. Jump off the canoe into crystal clear blue waters to snorkel over reefs and around Elvis Island. You will come ashore at Guiya village with stunning white sand beach. Strong current and some wave action.
- 8 Steam vents:** 3hr scenic; moderate to strenuous hike from the Waluma beach to mountain ridge. A few steep inclines followed by a flat walk past hot steam vents and great views. Steep descent back to the beach followed by a canoe ride back to Waluma Guest House.



### LEGEND:

Guesthouse	Market	Hot springs
Hiking trail	Snorkelling	Swimming
Canoe trail	Fishing	Thermal vents
Reef		
Mangrove		
Canoeing		
Waterfall		
Crocodiles		
Traditional entertainment		